



SHOPPING > ACCESSORIES

# The Symbolic Meaning Behind Every Character's Bed on "Euphoria"

Set decorator Julia Altschul breaks it all down.

BY KELLY ALLEN | PUBLISHED: FEB 26, 2022

SAVE ARTICLE



HBO

Every item on this page was hand-picked by a House Beautiful editor. We may earn commission on some of the items you choose to buy.

Your **bed** says a lot about you, and the teens on HBO's *Euphoria* are no exception. It's no coincidence that Maddy's bed boasts a mirrored headboard or that **Nate's pillows are monogrammed**.

Rue's bed is intentionally low to the ground (and no, it's not because she's always close to hitting rock bottom!). As the finale of the show's second season nears, we tapped set decorator Julia Altschul to get the low-down on how all of your favorite characters' beds came to life.

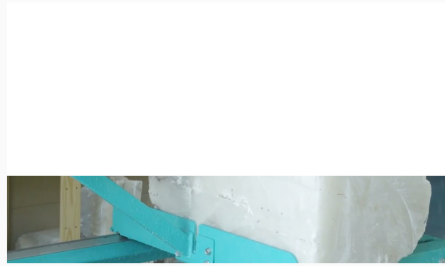
"We do a ton of vintage shopping," Altschul explains. "It's almost more rare that we buy new." The show—especially season two, which was **entirely shot on film**—has an aged look to it. Since the characters often recall and hold memories close, featuring items that felt like familial heirlooms made the most sense.

Many of the vintage items sourced for the show came from Altschul's favorite Los Angeles shops: **Candid Home**. **Pop Up Home**. **Wertz**



**Brothers Furniture**, and **Vintage on Point**. Outside of L.A. in Whittier, Altschul sources from **King Richard's**—a massive antique center with various vendors. “There’s also this really amazing rug spot that’s in Asheville, North Carolina, and they’re called **Lost Hunt**,” Altschul adds. “That’s where Elliott’s rug at the foot of his bed is from.”

MORE FROM HOUSE BEAUTIFUL



While the sets are packed with vintage pieces, you can find some bedding and accessories online from retailers like Target and Urban Outfitters. Plus, you can always use the elements of these beds as inspo for your own. Read on for all of the details.

## Rue’s Bed



HBO

Advertisement - Continue Reading Below

Quitting nicotine  
on your own can get messy.

Increase your odds of quitting up to 40%.

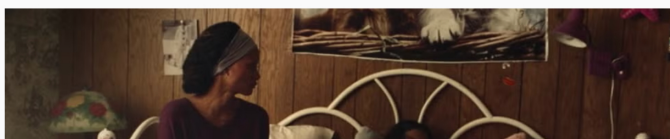
LEARN MORE



Naturally, Rue’s bedroom has gone through various transformations— from when she was in a deep depression in season one to when she destroyed her bedroom in season two. “It’s effortlessly cool,” Altschul says. “Rue is not trying too hard.”

The bed is actually one that’s several years old from IKEA, and it features tie dye bedding found on Etsy. Since it’s close to the ground, Rue can easily sprawl into all of the textured rugs that surround it—allowing her to really use the entire space.

## Gia’s Bed



Quitting nicotine  
on your own  
can get messy.

Increase your  
odds of quitting  
up to 40%.

LEARN MORE





HBO

With all of their mom's energy funneled into Rue, it's no surprise Gia's bedroom feels neglected. "Gia gets stuck in this childhood state and hasn't been able to push through to adolescence because the family focus is entirely on Rue's drug usage," Altschul explains. "So her bedroom is almost excessively youthful and ready for an upgrade."

Gia sleeps in a vintage daybed that's open on one side, which Altschul notes is almost crib-like. The floral bedding, mismatched pillows, and stuffed animals on the bed play up the youthful atmosphere. "We actually took tons of stuffed animals and glued them together to create a massive ball," Altschul adds.

## Maddy's Bed



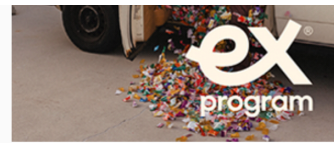
HBO

Advertisement - Continue Reading Below

"Out of every character, Maddy is the one who is more mature beyond her years," Altschul says. "She stands her ground, knows who she is, and started earlier than everyone else."



HBO



Maddy's bed comes from an '80s vintage set, which includes the ivory bed frame with a mirrored headboard, the nightstands, and a dresser set. The luxe, provocative look is intensified by pink floral brocade satin bedding, a white faux fur throw, and a velvet round accent pillow. "When you look at her bed, you wouldn't necessarily think it's a teenager's bed," Altschul says.

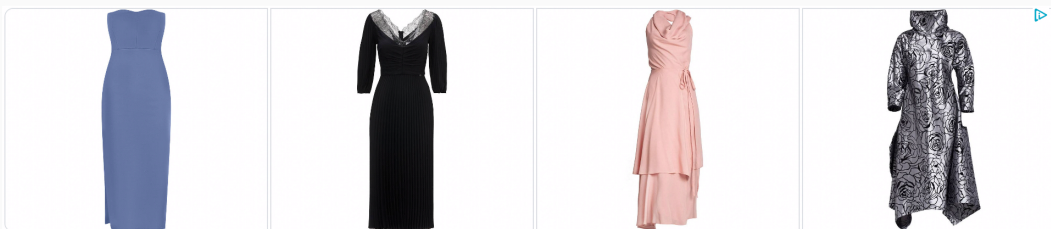
## Cassie's Bed



HBO

While Cassie and Lexi share a bedroom, their personalities are totally different—meaning their sides of the bedroom are, too. One thing you can gather from both sides, though, is that neither of the twin beds are supposed to look highly luxurious. "Their family is not meant to look like they have a ton of money," Altschul explains.

Advertisement - Continue Reading Below

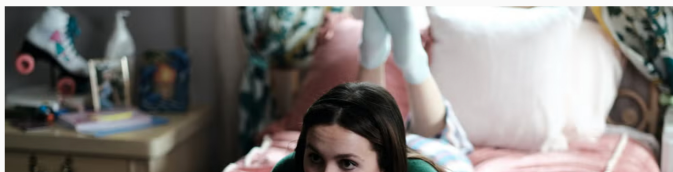


**WOLF & BADGER** Elevate Your Wardrobe Today  
Wolf & Badger

Cassie's side is very girly. "She is trying to go in the direction of Maddy's bedroom but definitely isn't there yet," Altschul says. Her heart-shaped headboard is a vintage wrought iron one that was painted pink. She has a crushed velvet rose bedspread and Cinderella-blue satin sheets from Urban Outfitters. One of her pillows features ruffles and little roses on it for a sophisticated feminine touch.

"There is a sweeter side to Cassie that has totally changed this season," Altschul continues. "But now she leaves her house when that not-so-sweet side comes out." Her bedroom embodies the line she now walks between being sweet, naive, and disloyal.

## Lexi's Bed





HBO

If Lexi's bedding caught your eye, good news: You can **buy it from Target**. She has a rattan swirl bed with a sloth stuck to the headboard. Nearby, there's jungle-inspired drapery from Urban Outfitters. "Lexi, like Gia, has been sort of in the background, so her side of the room is a lot younger," Altschul explains.

## Kat's Bed

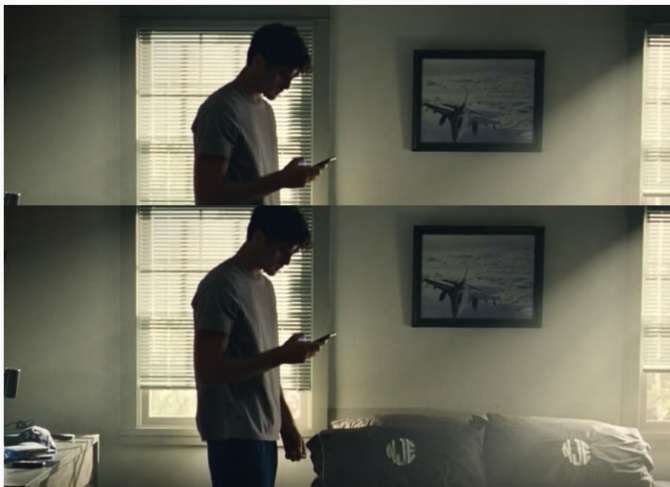


HBO

Advertisement - Continue Reading Below

Kat's bed, unsurprisingly, is a glamorous vintage brass one with rose finials. To get her sassy, independent spirit across, she has sequin throws and her mask hangs off her bed. "She's definitely bold," Altschul says. "We use a lot of deep colors in her room, including the black and pink floral bedding that matches her wallpaper."

## Nate's Bed





HBO

Nate is a very disturbed guy (to put it mildly), so his bedroom was designed to feel like an almost sterile environment. “The Jacobs' house is super modern, but the rest of it has some texture,” Altschul reveals. “Nate’s room is colder on purpose.”



HBO

He has a gray platform bed from Pottery Barn with slate gray bedding. The one detail that may seem out of place at first is his monogrammed pillowcases, but they make total sense for a family that’s pretending to be perfect. “His mom is still very much trying to keep up that facade,” Altschul explains. “A monogram is like the stamp of your name, so having those on Nate’s pillowcases shows they’re proud to be in the Jacobs family, which is important to her.”

## Jules’s Bed



HBO

Advertisement - Continue Reading Below

Jules’s bedroom is in a finished attic with vaulted ceilings, so she doesn’t have a headboard. Instead, there’s a window right above her bed. “It’s telling of her real free spirit and how she’s always in a dreamlike state,” Altschul gushes.



A steroid-free



HBO

Her sheets are a watercolor animal print, which pairs nicely with her watercolor duvet that looks like a purple-blue cloud. “Jules is an artist who is a little hard to nail down, so a floating mattress with color on it felt like the right way to go,” Altschul says.

## Elliot's Bed



HBO

One of Altschul's favorite bedrooms is Elliot's, which is extremely cozy and Pacific Northwest-inspired. It has the vibe of a kid's room where friends can always crash because their parents aren't around—a teenager's haven.



HBO

Also in an attic, Elliot's bed is vintage oak with warm-toned plaid bedding. Plenty of layers and texture are brought in through vintage '70s woven throws featuring warm oranges, browns, and even ducks. “His

topical cream for  
mild to moderate  
eczema for people 12  
and older

LEARN ABOUT A  
PRESCRIPTION  
TREATMENT OPTION

© 2023, Incyte Corporation, MAT-084-0098 07/23

character is extremely layered with a lot going on emotionally,” Altschul says. “It seems like his parents left him to his own devices, and he decides to take all of the leftover blankets from downstairs and throw them up in his room.”

---

Love shopping for your home and scoring the best deals? [We can help.](#)

---

Follow House Beautiful on [Instagram.](#)

---

Advertisement - Continue Reading Below

---

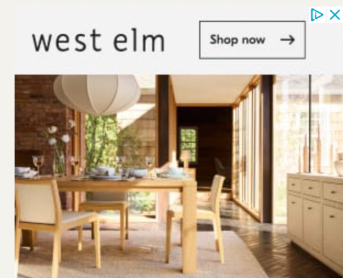
# SET DESIGNS



Sofia Coppola's Graceland Is a Poetic Dreamscape



Christina Hall and Tarek El Moussa Reunite



HGTV Is Premiering a Barbie Dreamhouse Competition



Christina Hall's Tennessee Home Stirs Up Drama

